

Nihavend Şarkı

Sözi Sami Dörüntüna

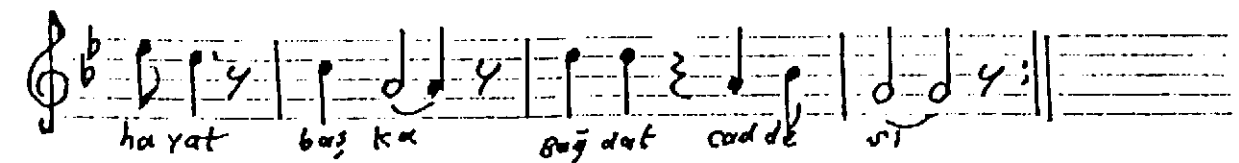
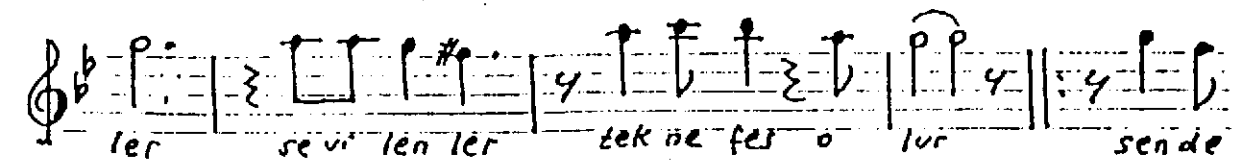
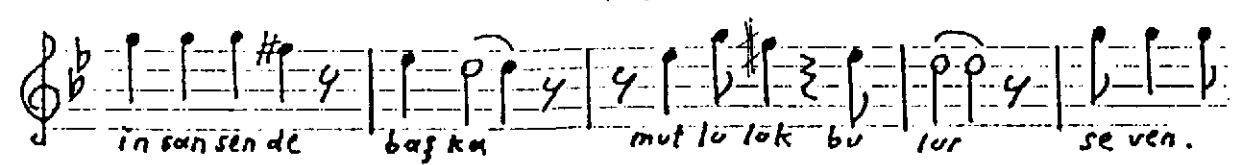
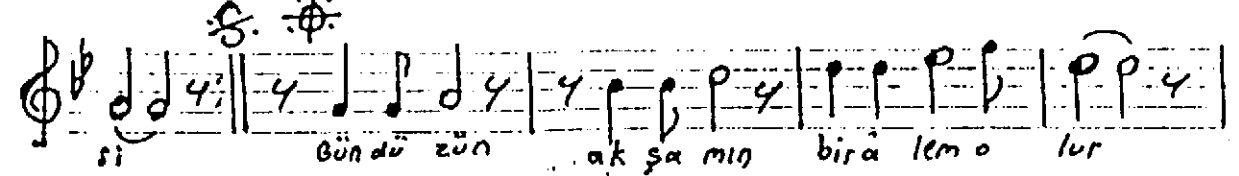
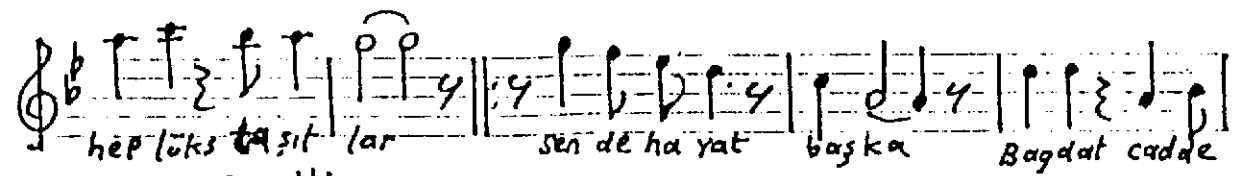
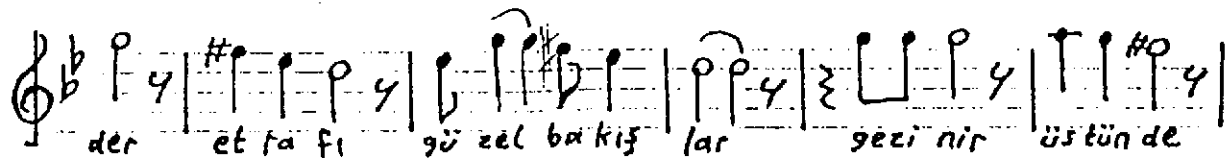
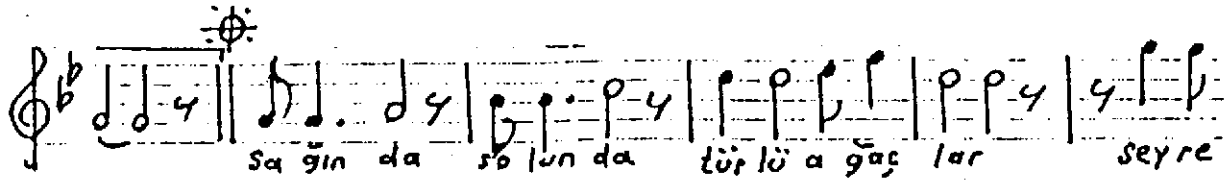
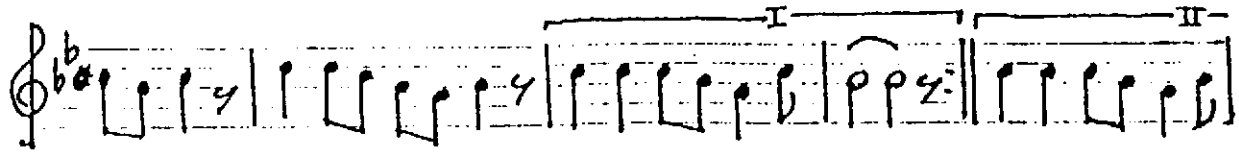
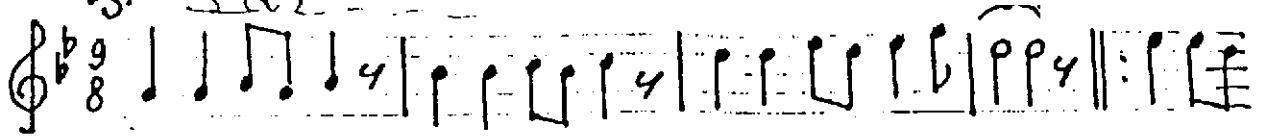
AKŞAK

SAĞINDA SOLUNDA TÜRLÜ AĞAÇLAR

Mûsiki Nezahat Sersev

D:234.Ş.

Saz - - - - -



Sa ğın da so lun da tür lü a ğa ş lar
 Sey re der et ra fı gü zel ba kış lar
 Ge zi nir üs tün de he p lüks ta şıt lar
 Sen de ha yat baş ka Ba ğ dat Ca des i

Gün dü zün ak şa mın bir â lem o lur
 İn san sen de baş ka mut lu luk bu lur
 Se ven ler se vi len ler tek ne fes o lur
 Sen de ha yat baş ka Ba ğ dat Ca des i